



SPECIFICATION FOR APPROVAL

CUSTOMER :	01061	REV.01
ARTICLE:	SWITCHING MODE POWER SUPPLY	
STANDARD :	OPEN	
MODEL NO. :	152-120150W	
OUR PART NO.:	152-120150-15B27B	
YOUR PART NO.:		
INPUT :	100-240V AC 50/60Hz	
OUTPUT:	12.0V DC 1.5A	

SWITCHING MODE POWER SUPPLY

SPECIFICATION

Model No.: 152-120150W

2. Descriptions:

These are a series of general purpose AC/DC adapters which convert 100Vac ~ 240Vac to a stabilized DC voltage of 12.0V with rated output current of 1500mA Please turn on the power first and then add the load when using this SMPS.

The switching mode power supply meets the requirements of lead free and ROHS.

3. Input Feature:

3.1 Input Voltage and Frequency

The switching mode power supply shall meet all specifications when powered from the following sources.

Rating Voltage	Line Frequency	Minimum Voltage	Maximum Voltage
100-240V AC	50/60Hz	90V AC	264V AC

3.2 Efficiency

The minimum efficiency shall be 80.29% under 115Vac/230Vac input and output full load.

3.3 Input Current

The maximum input current shall be less than 0.45A.

3.4 Input In-rush Current

Peak inrush current shall be limited to 80A.

3.5 Input Leakage Current

The leakage current shall not exceed 0.25mA.

4. Output Feature:

4.1 Output Voltage and Current

The switching mode power supply shall have one regulated DC output voltage: 12.0V DC.

The table below defines the total regulation banding for the output, which includes line regulation, load regulation, transient response, and effects due to environmental conditions. Voltage shall be measured at its output connector.

SWITCHING MODE POWER SUPPLY

SPECIFICATION

Model No.: 152-120150W

Output	Output Current Range		Output Voltage Range		Ripple & Noise
	Min	Max	Min	Max	Max.
+12.0V	0.0A	1.5A	11.4V	12.6V	150mVpp

Ripple & Noise Test: Add 0.1uF/50V ceramic capacitor and 10uF/50V aluminum electrolytic capacitor across the output terminal. Measured with 20MHz Bandwidth Oscilloscope.

4.2 Dynamic Response

The load current of the output is changed between 20% and 80% under full load at 0.25A/us; the excursion of the output shall not exceed 10% of the nominal output voltage. The output voltage shall be within 10% of the steady state voltage in 1ms.

4.3 Startup and Turn- on Delay

The switching mode power supply shall be able to start up into a resistive load up to the maximum rated current with maximum load capacitance of 1,000uF. The elapsed time between the application of input power and the attainment of output voltage to the nominal value shall not exceed 3 seconds.

5. Protection Feature:

5.1 Over-Current Protection

The switching mode power supply shall withstand a continuous over current without damage. It may be applied before power-up, or after power-up. The switching mode power supply shall perform normally again after over current removed.

5.2 Short Circuit Protection

Short circuit will not cause switching mode power supply to damage, or any safety hazards. It shall perform normally again after it is removed.

SWITCHING MODE POWER SUPPLY

SPECIFICATION

Model No.: 152-120150W

6. Safety Standards:

6.1 Safety

The switching mode power supply has approved by the following safety standards:

*EN60950

6.2 Dielectric Strength (HI-POT)

Input to Output Terminal: 4242Vdc 3Sec \leq 5mA.

Input to Case: 4242Vdc 3Sec \leq 5mA.

When DC voltage of 4.24KV is applied, and the voltage applied to the insulation under test, it gradually rises from zero to the prescribed voltage in 1s, and holds at the value for 3s among the input, output and housing, the current sensitivity shall be less than 5mA, after the test, the switching mode power supply shall exhibit no electrical and mechanical abnormalities.

7. Reliability:

7.1 Burn-in

The burn-in test will be performed at least 4 hours at 25 degrees centigrade under full load.

7.2 MTBF

When the operation is complying with this specification, the MTBF of switching mode power supply will be 25K hours at 25 °C.

8. Mechanical Specifications:

Weight: About 32g

Dimensions: Refer Outline on page 8

SWITCHING MODE POWER SUPPLY

SPECIFICATION

Model No.: 152-120150W

9. Environmental Conditions:

The switching mode power supply shall meet all requirements of this specification on any combination of operation ambient conditions and after exposure to any combination of non-operation ambient conditions specified in this section.

9.1 Temperature

Operating Temperature: 0°C~40°C

Storage Temperature: -20°C~ 80°C

9.2 Humidity

Operating Humidity: 10%~90%(non condensing)

Relative Humidity: 5%~95% (non condensing)

10. Main Measurement Equipments:

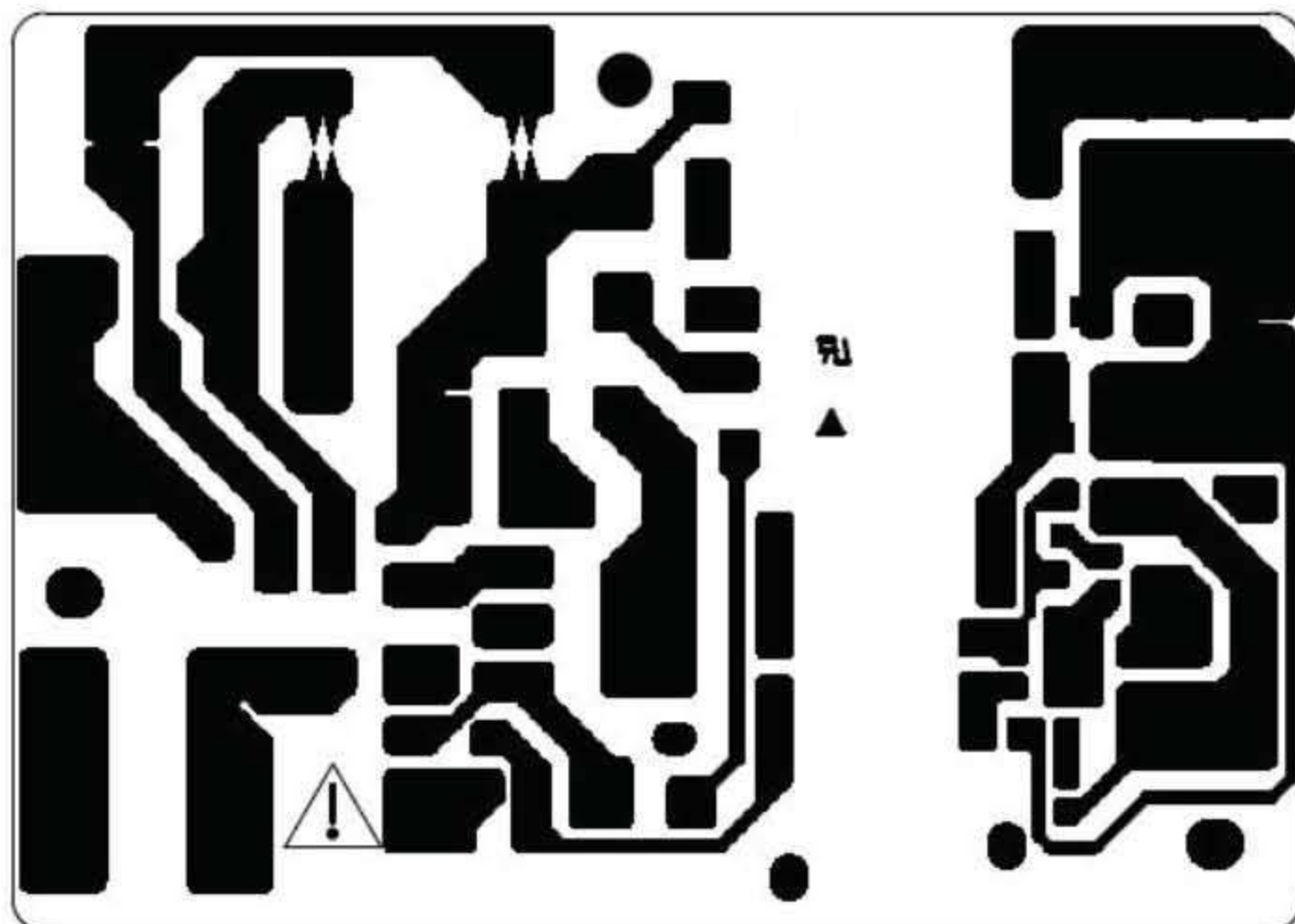
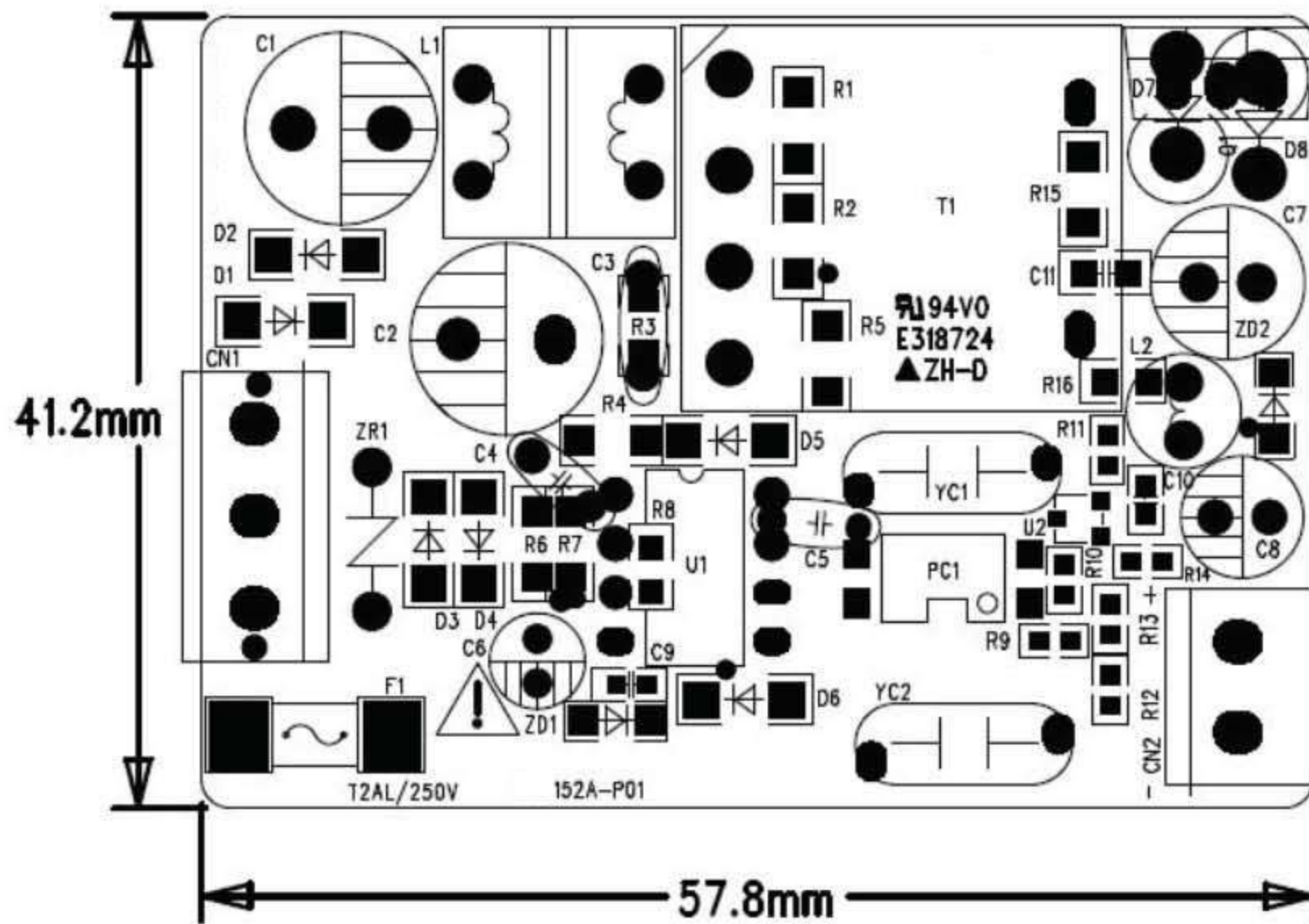
- | | |
|----------------------------------|------------------------|
| A. AC Source: | YOKOGAWA JL-1005A-500W |
| B. Power Meter: | Everfine YF9901 |
| C. Electronic Load: | Yokogawa IT8511 |
| D. Oscilloscope: | Matrix Mos-620CH 20MHZ |
| E. Digital Multimeter: | Victor Vc890D |
| F. DC Power: | RS1305DN |
| G. HI-POT Tester: | CHANGSHENG CS2670 |
| H. Insulation Resistance Tester: | TRANST TR7122 |

SWITCHING MODE POWER SUPPLY

SPECIFICATION

Model No.: 152-120150W

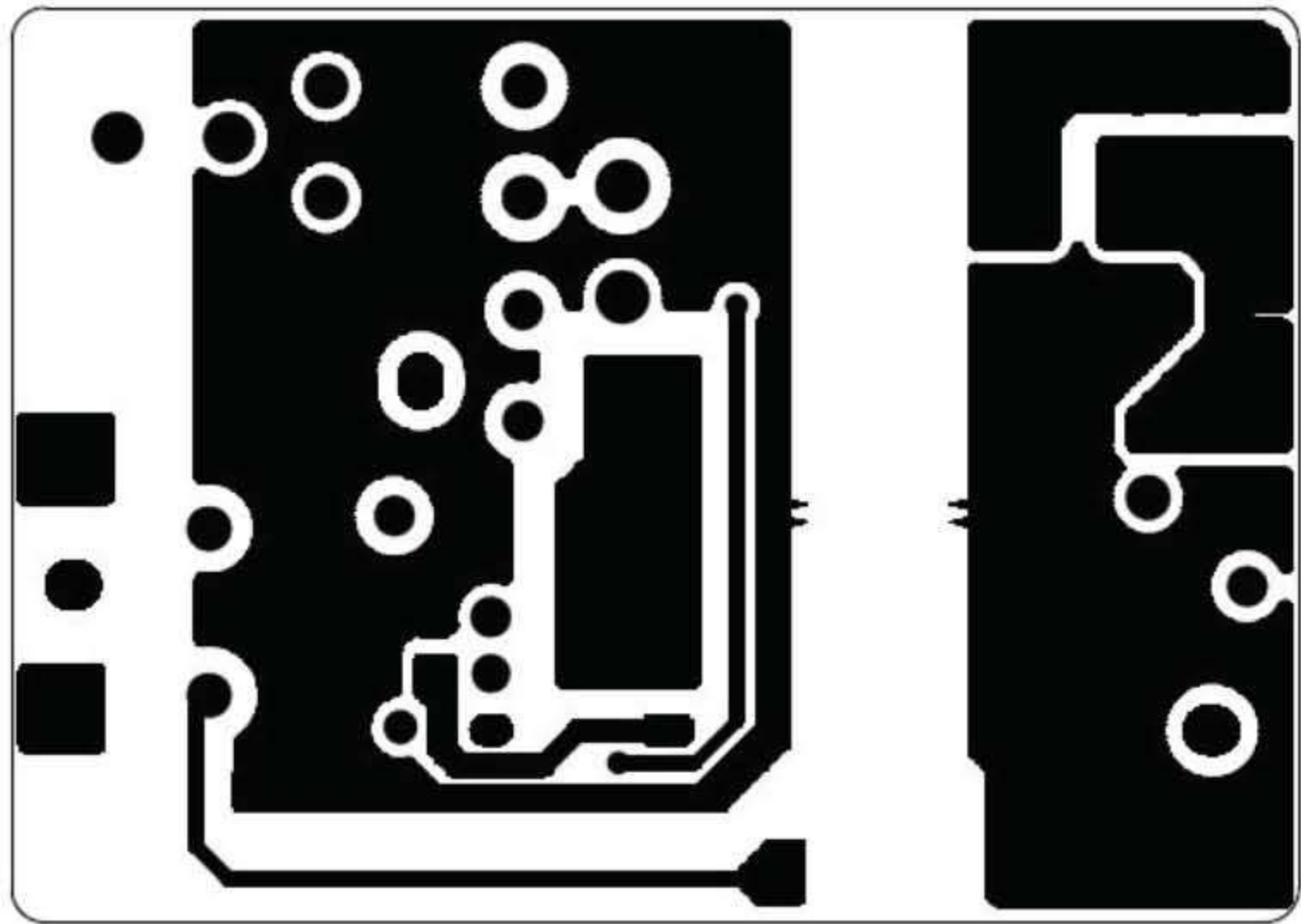
11. PCB Layout Drawing:



SWITCHING MODE POWER SUPPLY

SPECIFICATION

Model No.: 152-120150W

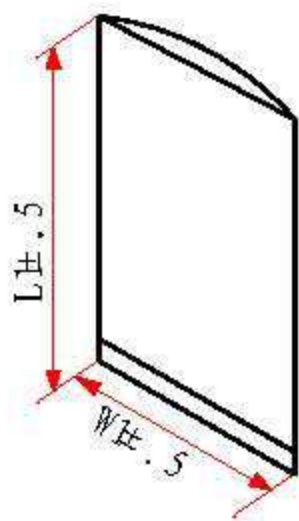


SWITCHING MODE POWER SUPPLY
SPECIFICATION

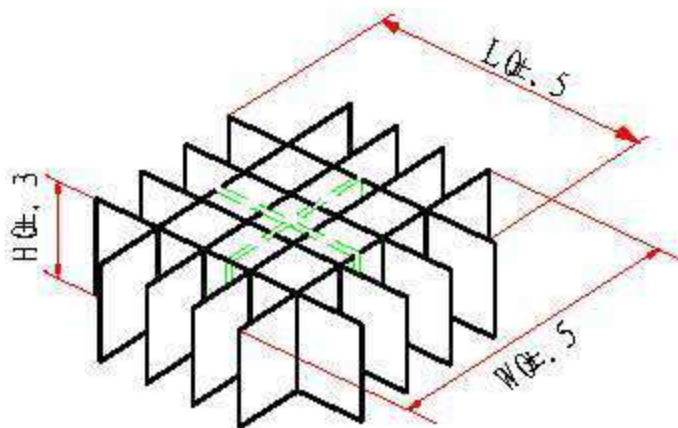
Model No.: 152-120150W

12. Package Drawing:

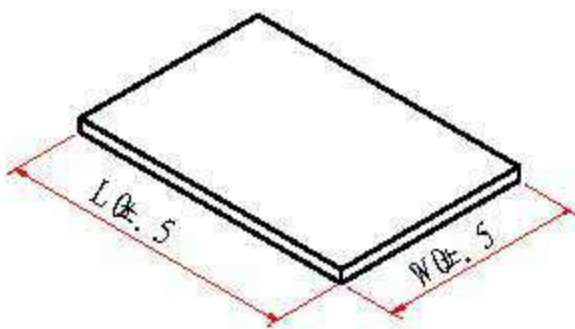
PLASTIC BAG/塑袋



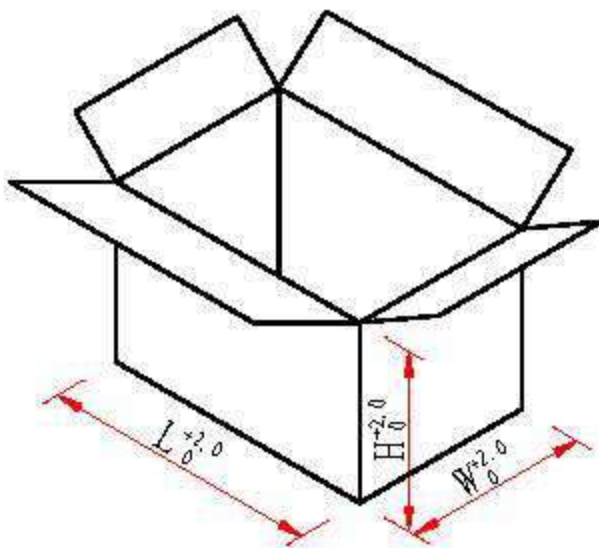
CARDBOARD/衬:



CARDBOARD/纸:



PAPER CASE/箱:



MECHANICAL DIMENSION:

	L(mm)	W(mm)	H(mm)
PLASTIC BAG	210	130	
CARDBOARD	440	55	
CARDBOARD	255	55	
CARDBOARD	440	255	
PAPER CASE	450	265	320

PACKING METHOD:

PACKING METHOD	12PCS/LAYER * 5 LAYERS
QTY	60PCS
N.G	6.8Kg
G.W	7.3Kg

SWITCHING MODE POWER SUPPLY
SPECIFICATION

Model No.: 152-120150W

13. Sample Test Report:

:01601						152-120150-15B27B			
: AC100-240V 50/60Hz DC 12.0V/1.5A						OPEN			
				1	2	3	4	5	
基 本 电 气 特 性	1、	AC90V/60Hz	DC 12.0 V ± 0.6V	12.21					PASS
		AC180V/50Hz	DC 12.0 V ± 0.6V	12.25					PASS
		AC264V/50Hz	DC 12.0 V ± 0.6V	12.25					PASS
	2、	AC90V/60Hz	DC 12.0 V ± 0.6V	12.13					PASS
		AC180V/50Hz	DC 12.0 V ± 0.6V	12.16					PASS
		AC264V/50Hz	DC 12.0 V ± 0.6V	12.17					PASS
	3、	AC90V/60Hz	LOAD (W)	22.21					PASS
		AC180V/50Hz	LOAD (W)	22.00					PASS
		AC264V/50Hz	LOAD (W)	22.10					PASS
	4、	AC115V/50Hz	≥80.29%(Average Of 25/50/75/100% Loads)	83.33					PASS
		AC230V/50Hz	≥80.29%(Average Of 25/50/75/100% Loads)	82.18					PASS
	5、	AC90V/60Hz	≤150 mV(LOAD)	60					PASS
		AC180V/50Hz	≤150 mV(LOAD)	40					PASS
		AC264V/50Hz	≤150 mV(LOAD)	30					PASS
	6、	(W)	< 0.3 W	0.2					PASS
	7、	(W)	(240Vac)	0.60					PASS
8、	(A)	2.5 - 4.0 A (100Vac)	2.90					PASS	
9、	(A)	2.5 - 4.0 A (240Vac)	3.12					PASS	
10、		30 分贝 MAX (10cm)	OK					PASS	
11、		DC4242V 60S<5mA	OK					PASS	
12、		25℃ 下, CASE ≤55℃	OK					PASS	
13、DC		OPEN BOARD	OPEN BOARD					PASS	
试 验 状 况	1、	■60℃ □80℃ ■48H □94H	OK					PASS	
	2、	■-20℃ □-40℃ ■48H □95H	OK					PASS	
	3、	■ 40℃ 95%RH ■48H □96H	OK					PASS	
	4、	3000 Min	OK					PASS	
	5、	≥8 AC100/240V 4H	OK					PASS	